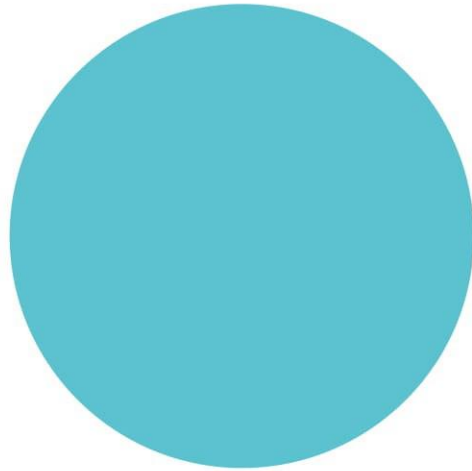


# infinix precision corp.



A FULL SELECTION OF HIGH QUALITY FORMING TOOLS



## About Us

Infinix is a privately-held, ISO-certified company formed by a dedicated team with more than 30 years of experience in tools manufacturing.

We offer a portfolio of tooling such as punches, dies, cutters, fingers, pins, other general forming tools, and precision machining parts that fit to your production, do the job better, and lower overall production cost.

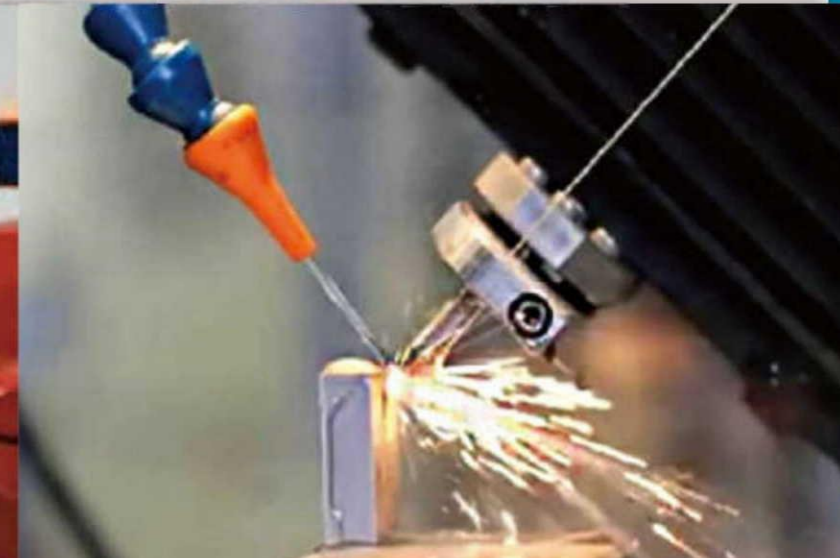
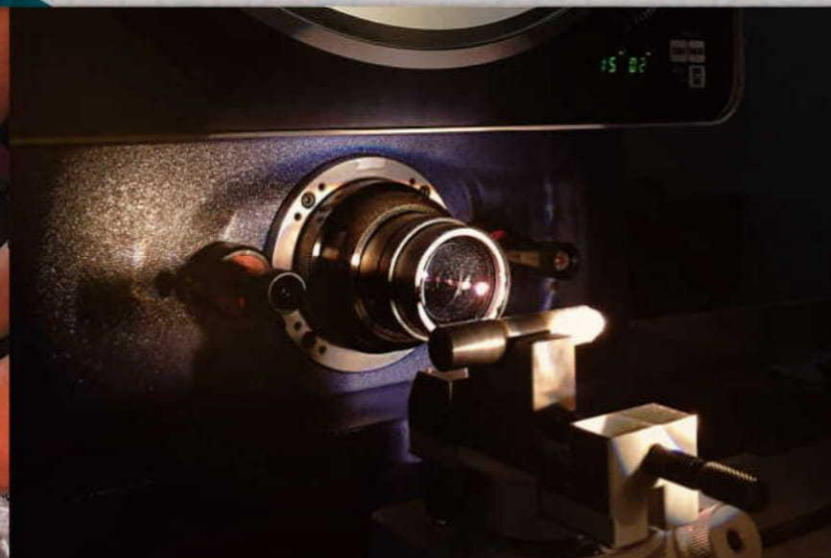
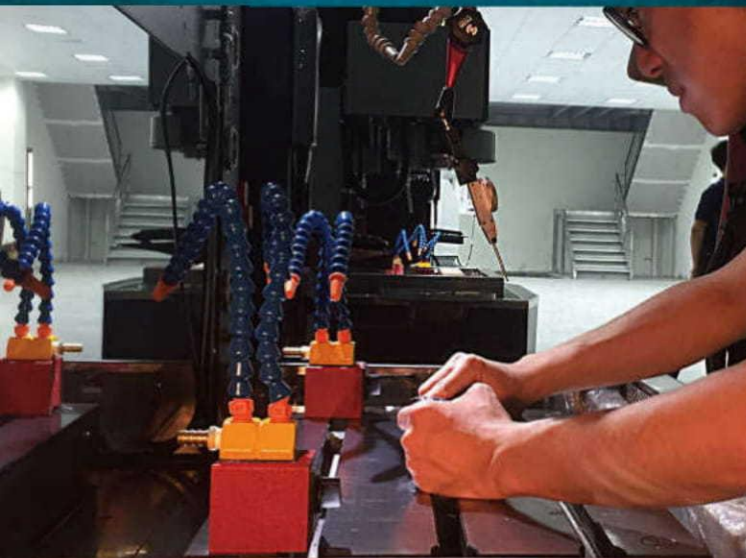
## Manufacturing Facilities

Our goal has always been to deliver quality tools with dedication to your schedule. To achieve that, we invested in new, most advanced equipment, developed new methods and implemented the most efficient and cost-effective manufacturing processes from the start. Our manufacturing facility is set up to make customer-specific tooling to provide you with exactly what you need.



## List of Production Equipment

- 5-Axis CNC Machine
- CNC Quick Turning
- Vertical Machining Center
- Centerless Grinding Machine
- CNC Profile Grinding Machine
- Internal Grinding Machine
- External Grinding Machine
- Surface Grinding Machine
- Die Sinker EDM
- Wire Cutting EDM
- Micro Drill EDM
- Polishing Machine

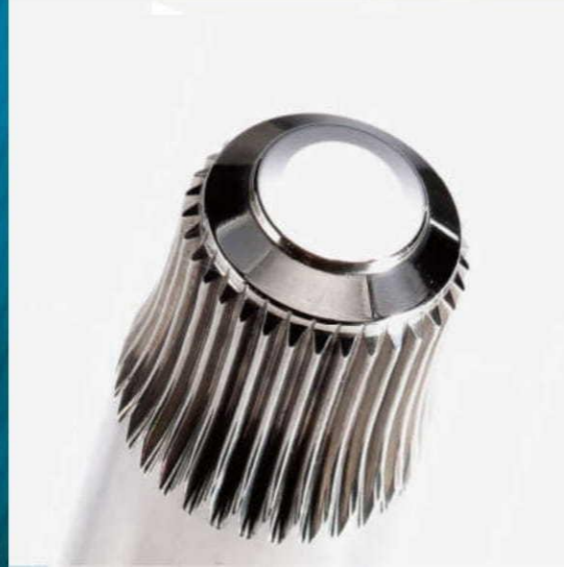




## Punches and Pins

in Various Grade of High Speed Steel, Carbide, and Powder Metallurgical

Infinix utilizes modern equipment such as CNC profile grinding machine, EDM, and 5-Axis CNC Engraving Machine to produce high precision and complex shape punches.



## Forming Dies

for Cold, Warm, or Hot Forming, and for Forging Presses

Combination of the most advanced CAD-CAM software such as NX CAD/CAM, SMARTCAM, SOLIDWORK, with modern high precision equipments such as 5-Axis Machining Center, EDM, help us to tackle the difficulty of producing complex shapes forming dies.



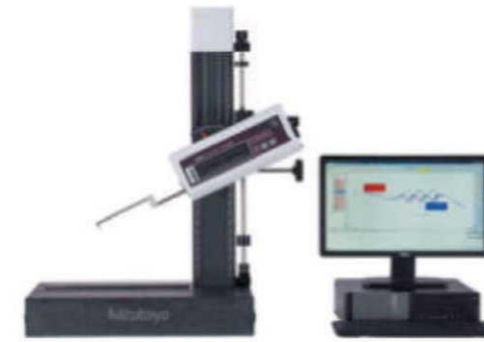




## Highest Quality Standard

to make each and every product great

Our ISO 9001:2015 registered Quality Management System is the framework to our robust operation. Experienced staff will bring you the highest level of quality at a competitive price.



List of Quality and Inspection Equipment:

- Rockwell Hardness Tester
- Contour Measuring Machine
- Roughness Measuring Machine
  - Profile Projector
  - Digimatic Height Gage
- Non-Contact Measuring Machine
  - Laser Etching
  - Vacuum Packing
- Foam-in-bag Packaging Machine
- Inspection Report for each tool

## General Forming Tools and Precision Machining Parts

Cutter, Die Case, Transfer Finger, Die Insert, Punch Holder, etc.

We manufacture a full selection of high quality general forming tools such as die case, cutter, transfer finger, etc. We maintain a large inventory of semi-finished stock for rapid delivery. If you frequently use tooling that is outside our standard stock, please make us aware of your usage and we will be happy to stock additional sets on site.



**infinix precision corp.**

No.5, Ln. 61, Sec. 2, Wenhua Rd., Rende Dist.,

Tainan City 71755, Taiwan (R.O.C.)

Tel: 886-6-2668485 Fax: 886-6-2667739

tooling@infinix.com.tw

www.infinix.com.tw

